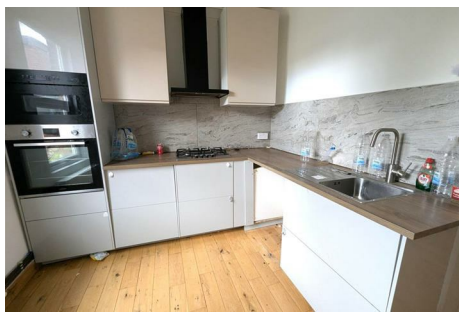


RAINBOW REID



ESTATE AGENTS || LETTING AGENTS || PROPERTY MANAGEMENT



396a Forest Road Walthamstow, London, E17 5JF

An exciting opportunity situated in the heart of Walthamstow, this spacious two bedroom split level maisonette on Forest Road offers a superb opportunity for first time buyers/investors.

The property in full comprises: entrance from Forest road in to a welcoming hallway with stairs rising to the first floor, modern kitchen and bathroom, spacious lounge, and two bedrooms (one of which is on the second floor). The property is offered with no upper chain and must be viewed to fully appreciate.

Ideally positioned just a stone's throw from Lloyd Park, residents can enjoy one of Walthamstow's most popular green spaces, home to open parkland, sports facilities, cafés and the renowned William Morris Gallery. The surrounding area has become increasingly sought after thanks to its vibrant community atmosphere and blend of independent shops, restaurants, cafés and pubs.

£320,000

396a Forest Road

Walthamstow, London, E17 5JF



Directions





Floor Plan

These particulars, whilst believed to be accurate are set out as a general outline only for guidance and do not constitute any part of an offer or contract. Intending purchasers should not rely on them as statements of representation of fact, but must satisfy themselves by inspection or otherwise as to their accuracy. No person in this firm's employment has the authority to make or give any representation or warranty in respect of the property.

